

WARRIOR Roll & Guide Support Bed

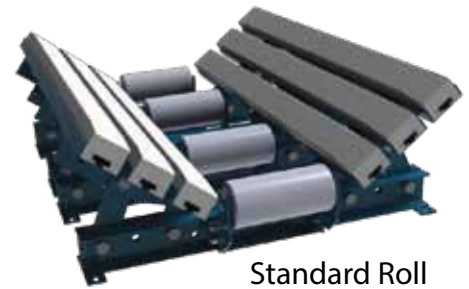
The Warrior Roll & Guide Support bed creates a seamless seal, helping to eliminate dust and spillage in the loadzone. The effective design of the Roll & Guide Bed utilizes low friction slider bars on the wing sections and rollers in the center. As a result, belt drag is minimized while the belt is fully supported at the edges- *right where it is needed*. The adjustable wing sections ensure a flat level surface for the conveyor belt and the loadzone giving the sealing system the ability to achieve optimal performance.

Benefits

- Easy to install and maintain
- Increases skirtboard life
- Removes gaps between skirtboard and seal
- Eliminates crimping of interior skirt liners

Features

- Adjusts to fit trough angles
- Low friction bars
- Center standard or impact rollers

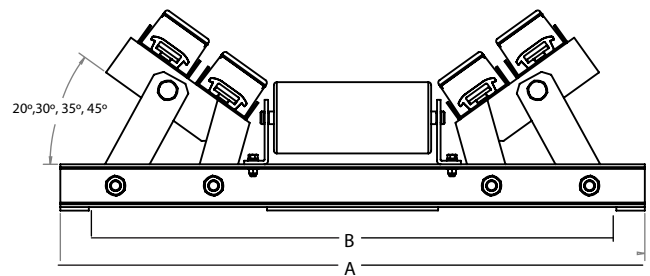


Standard Roll



Impact Roll

Warrior Roll & Guide Bed Ordering Information Double Bar				
Belt Width	Product Number	Dimensions		Number of bars Per Side
		A	B	
30 (650-800)	BSCT0030XXR0	41.5 (1054)	39 (991)	2
36 (800-1000)	BSCT0036XXR0	47.5 (1207)	45 (1143)	2
42 (100-1200)	BSCT0042XXR0	53.5 (1359)	51 (1295)	2
Warrior Roll & Guide Bed Ordering Information Triple Bar				
48 (1200-1400)	BSCT0048XXR0	59.5 (1511)	57 (1448)	3
54 (1400-1600)	BSCT0054XXR0	65.5 (1664)	63 (1600)	3
60 (1600-1800)	BSCT0060XXR0	71.5 (1816)	69 (1753)	3
72 (1800-2000)	BSCT0072XXR0	83.5 (2121)	81 (2057)	3
R0 = standard roll ; R1=impact roll				
XX= Cema rating/roller size				
Example: C5 = Cema rating "C" with 5" Roller Size				



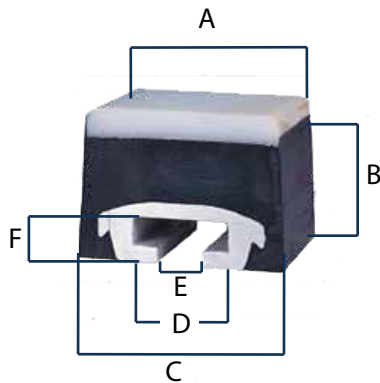
- Typical bars and beds are 48" (1220 mm). Custom lengths are available
- Not recommended for belts with speed over 700fpm
- It is important to ensure that adequate power is available in the conveyor drive to compensate for additional frictional drag when installing one or more Warrior Slider Beds.

WARRIOR Impact Bars

Warrior Impact Bar

Product Number BIBT0L048

***Part number is for 48" (1220 mm) bar, custom lengths are available



UHMW 48 inch Bar

A	3.7 (94)
B	3.0 (75)
C	4.0 (102)
D	1.5(38)
E	.75(19)
F	.51(13)

WARRIOR IMPACT BAR CHARACTERISTICS

- Coefficient of Friction: 0.5
- Service Temperature Range: -20° to 140°F (-29° to 60° C)

WARRIOR IMPACT BAR CONSTRUCTION

- Fasteners: 1/2 in. diameter T-Bolts
- T-Slot: Aluminum
- Bearing Layer: UHMW Polyurethane
- Absorption Layer: 50-Durometer SBR Rubber

CHEMICAL EXPOSURE

- Warrior Impact Bars can be used with most industrial chemicals.



BENETECH®

Please consult your Benetech Representative
for additional information.

Benetech, Inc.
2245 Sequoia Drive, Suite 300,
Aurora, Illinois 60506

p: 630-844-1300
f: 630-844-8690
www.benetechglobal.com