

SEALING SYSTEMS

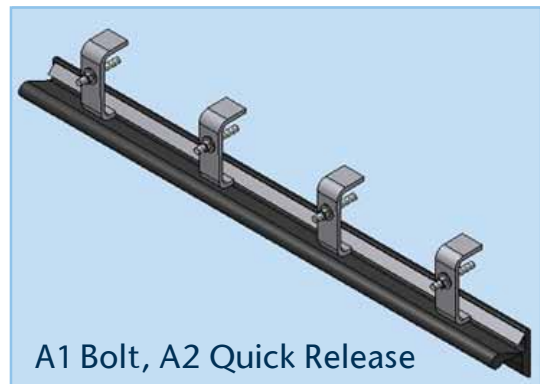
A simple system. Superior results.

- Our sealing system has few parts and is simple to install
- The modular design allows the system to be built to any length on the conveyor.
- All seal options are interchangeable.
- Skirt rubber adjustments are a one-man operation.
- Maintenance can be done safely outside of the belt.

Benetech Load Zone Clamps

Standard Clamp

- Designed to ensure skirt delivers consistent seal.
- Economical solution for load point spillage.
- Save service access, long service life
- Bolt option comes in powder-coated, galvanized or stainless steel.
- Swivel Handle option comes in galvanized only.
- Available in 4' and 6' modular sections.



A1 Bolt, A2 Quick Release

New Design Quick Release Clamp

- Simple maintenance without the use of tools.
- Side clamps through channel strut
- Skirting adjustments and replacement are quick and easy.
- Comes in standard 4ft and 1m (39in) meter modules.
- Easy 4-step installation process:
 1. Weld channel strut to skirt board.
 2. Slide clamps through channel strut.
 3. Slide on aluminum angle brackets.
 4. Twist clamps to tighten, then pull down to lock.

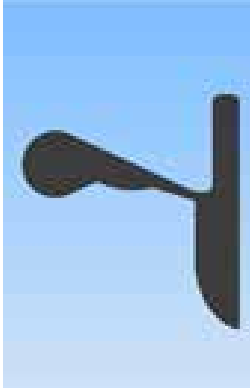


B1 Quick Release

Product Numbers			
Standard Clamp, Quick Release Clamp			
BLCXnMMxx			
BLC	Xn	MM	xx
Benetech Loadzone Clamps	Type/Size	Material	Length ft
	A1	PC-Powder Coated GA-Galvanized	04,06
	A2	GAA-Galvanized	04,06
	B1	GAA-Galvanized	*03,04
*03 Quick Release Galvanized Clamp Kit only available in 1m length			

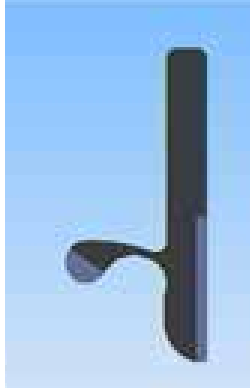
The Benetech Seals

B-Seal



Superior seal with a great price

B-Plus/BX- Seal



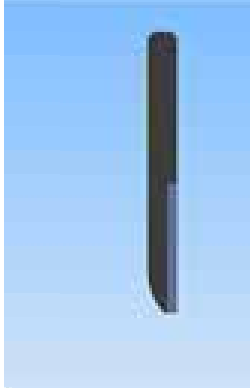
B-Plus with polyurethane BX-Seal all rubber

Classic Seal



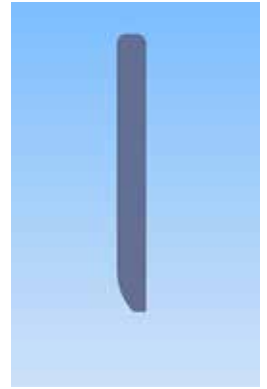
Simple seal to get the job done

Classic Plus Seal



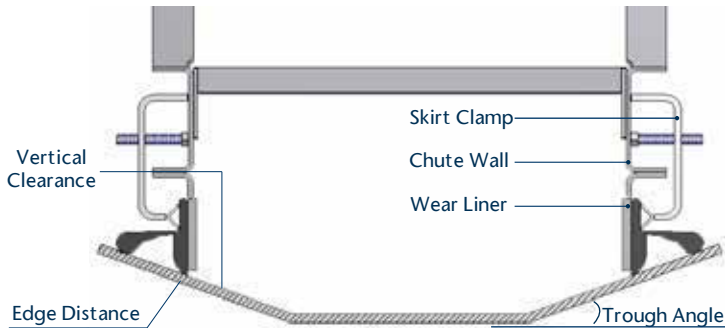
Polyurethane addition to basic profile provides exceptional sealing when belt edge distance is minimal

Classic Poly Seal



This solid polyurthane seal is practical and outlasts other products such as steel, UHMW and rubber.

Skirting Type	Height IN. (MM)	Part Number	Material	Durometer	Max. Belt Speed*	Temp. Range	Standard Length FT. (M)
B-Seal	4.25 (108)	BCSA0-0001	EPDM Rubber	70A	1000	-20° to 250° (-29° to 121° C)	200 (61)
B-Plus	4.75 (121)	BCSB0-0001	SBR/PU	60A/90A	1200	-20° to 250° (-29° to 121° C)	100 (30)
B-Plus	6.00 (150)	BCSB1-0001	SBR/PU	60A/90A	1200	-20° to 250° (-29° to 121° C)	100 (30)
B-Plus	7.88 (200)	BCSB2-0001	SBR/PU	60A/90A	1200	-20° to 250° (-29° to 121° C)	100 (30)
BX-Seal	4.75 (121)	BCSC0-0001	SBR	60A	1000	-20° to 250° (-29° to 121° C)	100 (30)
BX-Seal	6.00 (150)	BCSC1-0001	SBR	60A	1000	-20° to 250° (-29° to 121° C)	100 (30)
BX-Seal	7.88 (200)	BCSC2-0001	SBR	60A	1000	-20° to 250° (-29° to 121° C)	100 (30)
Classic	5.00 (127)	BCSE1-0001	SBR	60A	1000	-20° to 250° (-29° to 121° C)	50 (15)
Classic	6.00 (150)	BCSE2-0001	SBR	60A	1000	-20° to 250° (-29° to 121° C)	50 (15)
Classic	7.88 (200)	BCSE3-0001	SBR	60A	1000	-20° to 250° (-29° to 121° C)	50 (15)
Classic Plus	4.75 (121)	BCSD0-0001	SBR/PU	60A/90A	1200	-20° to 250° (-29° to 121° C)	100 (30)
Classic Plus	6.00 (150)	BCSD1-0001	SBR/PU	60A/90A	1200	-20° to 250° (-29° to 121° C)	100 (30)
Classic Plus	7.88 (200)	BCSD2-0001	SBR/PU	60A/90A	1200	-20° to 250° (-29° to 121° C)	100 (30)



*For information on other skirting options and sizes, including PU and slab/beveled rubber, please contact your Benetech Inc representative.

Trough Angle	Edge Distance		
	B-Seal	B-Plus/BX	3 Classic Types
0°	3.00 (76)	2.25 (57)	1.50 (38)
20°	3.75 (95)	2.75 (70)	1.50 (38)
35°	4.18 (106)	3.00 (76)	1.50 (38)
45°	4.38 (111)	3.25 (83)	1.50 (38)

- **Edge Distance** - Space between outside chute wall and edge of conveyor belt. Determines how much belt is available for skirting width.
- **Vertical Clearance** - Height available from the belt up to the first obstruction. Determines the maximum height of skirting allowed.
- **Trough Angle** - Angle at which belt edges are elevated to carry material.

Benetech Seals	
Unit of Measure = 1 FT.	
Example:	
100 FT. of B-Plus Seal, 4 3/4"	
Order: BCSB0-0001 QTY:100	



Benetech, Inc.
2245 Sequoia Drive, Suite 300
Aurora, Illinois 60506

p: 630-844-1300
f: 630-844-8690
www.benetechglobal.com