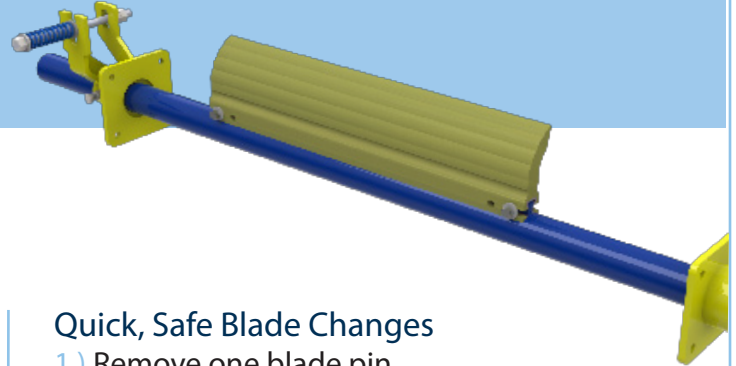


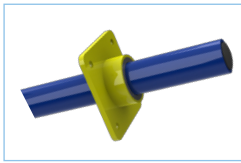
## BEP1 Quarry Line



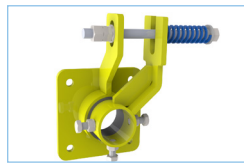
### Features & Benefits

- Easy to install and maintain
- Simple spring tensioner design
- Tension is easy to apply and adjust
- 48" belt widths and less only need one tensioner
- Abrasion resistant polyurethane blade
- Blade is a simple dual pin change out design

#### Mount Bracket



#### Spring Tensioner



### Quick, Safe Blade Changes

- 1.) Remove one blade pin
- 2.) Slide in the new blade
- 3.) Replace the blade pin



### BEP1 Quarry Replacement Blade

Belt Width in.	mm.	Blade Ordering Number
12	304	BAPR1-012-010U5
18	450	BAPR1-018-016U5
24	600	BAPR1-024-022U5
30	750	BAPR1-030-028U5
36	900	BAPR1-036-034U5
42	1050	BAPR1-042-040U5
48	1200	BAPR1-048-046U5
54	1350	BAPR1-054-052U5
60	1500	BAPR1-060-058U5
72	1800	BAPR1-072-070U5
84	2133	BAPR1-084-082U5

### BEP1 Quarry Full Assembly

Belt Width in.	mm.	Cleaner Ordering Number
12	304	BEP1-012-1U5E1
18	450	BEP1-018-1U5E1
24	600	BEP1-024-1U5E1
30	750	BEP1-030-1U5E1
36	900	BEP1-036-1U5E1
42	1050	BEP1-042-1U5E1
48	1200	BEP1-048-1U5E1
54	1350	BEP1-054-1U5E2
60	1500	BEP1-060-1U5E2
72	1800	BEP1-072-1U5E2
84	2133	BEP1-084-1U5E2