



## Wet Dust Suppression

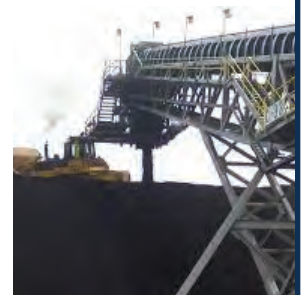
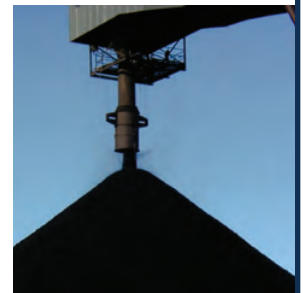
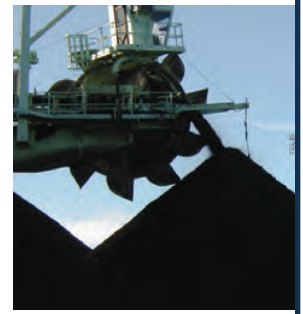
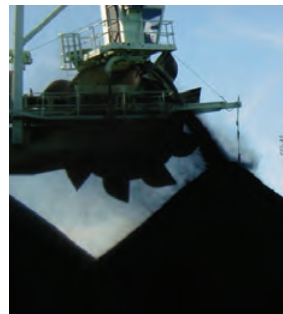
### Experience Drives Success

### Multiple Transfer Coverage

With over a quarter century of experience, Benetech's chemical suppression systems have been proven to be the most reliable, efficient, safe and economical solution.

The **CleanPak**, combined with our environmentally friendly chemical suppression, stops dust BEFORE it is generated. When compared to other means of dust control, its superior performance wins every time.

- Fog systems only attempt to reduce dust after it is generated and has limited success
- Water-only sprays are inefficient and are unable to fully control dusting
- Controls dusting to below 2.0 mg/m<sup>3</sup> for safe respirable limits in enclosed areas
- Decreases opacity during stackout and dumping operation
- Effective in rapid air movement applications enclosed areas not necessary



# Benetech's Chemical Dust Suppression

Significantly improves water's ability to spread quickly, reducing quantity of water required and improving surface coverage provided.

## Features

- Excellent wetting characteristics
- Highly concentrated
- Performs well in varied water qualities
- Non-corrosive, non-toxic, non-flammable
- Harmless to skin and clothing
- Biodegradable



- Simple Installation
- Minimal Maintenance
- Low O&M Costs

## CleanPak Application System

Benetech's CleanPak Application System provides optimum results without expensive and complex equipment. Installation is simple and requires a low initial cost. Ongoing maintenance needs are minimal and can be done in-house or by Benetech professionals.

- The system utilizes an existing water system and a single chemical pump to provide a balanced flow of wet surfactant solution to the application points
- Chemical rates are adjusted based on water hardness, amount of fines in coal and type of application
- On-off operation for performance test, automated for permanent installation using on belt detection and running belt running signals



- Conveyor Transfers
- Ship/Truck Unloading Hoppers
- Rail Unloading
- Stackout/Reclaim

CleanPak Performance Criteria			
MODEL	CAPACITY RANGE (MTPH*)	SKID DIMENSIONS LxWxH(mm)	SKID WT (kg)
CleanPak 700	200-700	610x610x910	230
CleanPak 2200	600-2200	610x610x910	230
CleanPak 5000	2000-5000	1200x1200x1000	460

**BENETECH**  
2245 Sequoia Dr. #300  
Aurora, IL 60506

+1 (630) 844 -1300  
info@benetechusa.com  
www.benetechglobal.com

